

# Kaye Wiggs Sister Dresses

Coordinated dresses for Kaye Wiggs Nelly, Kaye Wiggs MSD girls,  
and Kaye Wiggs Cinnamon using *gracefaerie* patterns

## For Nelly – Adapting #44 Seasons for Seola

<http://www.gracefaerie.com/patterns/pattern44.html>

### Cutting out the Dress:

1. Select the Autumn Bodice Front, Autumn Bodice Back, Autumn & Winter Sleeve, Autumn & Winter Collar, Autumn & Winter Collar Interfacing, Autumn Sleeve Band, and Autumn Sleeve Band Interfacing from the #44 pattern.
2. Re-mark the dart on the Bodice Front. Make a dot 1/8" above the bust point dot. Make a dot 1/8" below the upper dot at the side seam. Do not change the lower dot on the side seam. Re-draw the dart.
3. Add 5/8" to the length of the Sleeve Band and the Sleeve Band Interfacing.
4. Cut the Bodice, Sleeve, Sleeve Band and Collar pieces from your dress fabric. Cut the Bodice Lining and Collar Lining from white cotton batiste. Cut the Sleeve Band Interfacing from a lightweight fusible interfacing.
5. Skirt Cutting Guide (calf-length dress)

*The shorter dimension runs parallel to the grain (selvage edge) of the fabric.*

Top Skirt (shown in blue): Cut one piece 8 1/4" x 28"

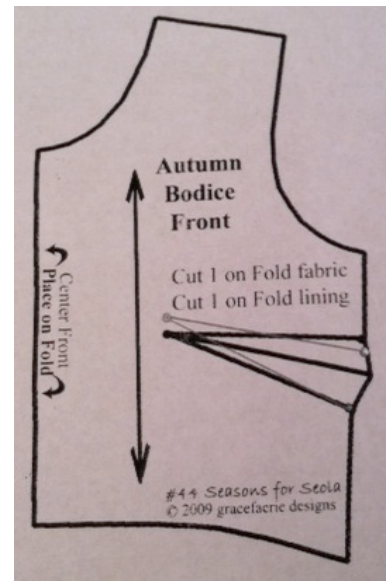
Top Skirt Ruffle (shown in blue): Cut one piece 2 x 56"

Underskirt: Cut one piece from white cotton batiste 8 1/2" x 28"

Underskirt Ruffles: A. (shown in pink): Cut one piece 2 1/2" x 68"

B. (shown in white eyelet): Cut one piece 4" x 84"

Joining Strip: Cut one piece from white cotton fabric 1 1/4" x 28"



### Making the Dress:

Follow the Instructions for making the #44 Autumn Dress, with the exception of the Sleeve Band and Side Seam, Page 4 and 5. In order to accommodate Nelly's generous hands, I left the Sleeve Band open and added a snap to close.

Step 13. Omit overcasting. Instead, turn under 1/4" along that edge and press.

Step 15. With right sides together, pin the Sleeve to the Sleeve Band, stitch. Press seam allowance toward the Sleeve Band, and topstitch with a decorative stitch. Fold the Sleeve Band toward the inside of the Sleeve along the Fold line. Hand stitch along the seam line that joins the Sleeve Band to the Sleeve. Press.

17. With right sides together, pin the side seams of the Bodice and the underarm seams of the Sleeve. Make a dot on the Sleeve 5/8" above the line of stitching that joins the Sleeve to the Sleeve Band.



In one continuous seam, stitch from the lower edge of the Bodice to the dot on the Sleeve. Clip seam near underarm. Press seam open, continuing to press open 1/4" along the unstitched seam allowance. Hand stitch along the seam allowance and Sleeve Band to secure.

Turn the Bodice to the right side and re-press the side seam and Sleeve Band.

When you finish your dress, add a snap at the Sleeve Band to close.

### **For Kaye's MSD girls – Adapting #45 Seasons for MSD & Annabella Supplement**

<http://www.gracefaerie.com/patterns/pattern45.html>

#### **Cutting out the Dress:**

1. Select the Autumn Bodice Front and Autumn Bodice Back from the #45 Annabella Supplement. Select the Autumn & Winter Sleeve, Autumn & Winter Collar, Autumn & Winter Collar Interfacing, Autumn Sleeve Band, and Autumn Sleeve Band Interfacing from the #45 pattern.

2. Add 5/8" to the length of the Sleeve Band and the Sleeve Band Interfacing.

3. Cut the Bodice, Sleeve, Sleeve Band and Collar pieces from your dress fabric. Cut the Bodice Lining and Collar Lining from white cotton batiste. Cut the Sleeve Band Interfacing from a lightweight fusible interfacing.

5. Skirt Cutting Guide (floor-length dress):

*The shorter dimension runs parallel to the grain (selvage edge) of the fabric.*

Top Skirt (shown in pink): Cut one piece 8 1/4" x 28"

Top Skirt Ruffle (shown in pink): Cut one piece 2 x 56"

Underskirt: Cut one piece from white cotton batiste 8" x 28"

Underskirt Ruffles: A. (shown in blue): Cut one piece 2 1/2" x 68"

B. (shown in white eyelet): Cut one piece 4" x 82"

Joining Strip: Cut one piece from white cotton fabric 1 1/4" x 28"

#### **Making the Dress:**

Follow the Instructions for making the #45 Autumn Dress, with the exception of the Sleeve Band and Side Seam. In order to accommodate the girls' generous hands, I left the

Sleeve Band open and added a snap to close. Please follow the guidelines for the Sleeve Band and Side Seams for Nelly's dress on page 1 of this file.

### **For Cinnamon– Adapting #43 Bewitched, Tattered, and Transported**

<http://www.gracefaerie.com/patterns/pattern43.html>

#### **Cutting out the Dress:**

1. Select the Waif Dress Bodice Front and Waif Dress Bodice Back from the #43 pattern.
2. Add ¼" along the center back edge of the Bodice Back.
3. Add 3/8" along the lower edge of the Bodice Front and the Bodice Back.
4. Cut out the Bodice pieces from your dress fabric. Cut out the Bodice Lining from white cotton batiste.
5. Skirt Cutting Guide (calf-length dress):

*The shorter dimension runs parallel to the grain (selvage edge) of the fabric.*

Top Skirt (shown in pink): Cut one piece 3 ¼" x 16"

Top Skirt Ruffle (shown in pink): Cut one piece 1 5/8" x 26"

Underskirt: Cut one piece from white cotton batiste 2 3/4" x 16"

Underskirt Ruffle (shown in white eyelet): Cut one piece 2 ¼" x 32"

#### **Making the Dress:**

Follow the Instructions for making the #43 Waif Dress Bodice and Lining. Add the Top Skirt Ruffle to the Top Skirt, following the Seasons Autumn Dress Instructions. Add the Underskirt Ruffle to the Underskirt. Finish assembling the Skirt following the Seasons Autumn Dress Instructions. Join the Skirt to the Bodice, and finish the Bodice Lining following the #43 Instructions.



<http://www.gracefaerie.com/>

Follow **gracefaerie designs** on facebook!

<http://www.facebook.com/pages/Gracefaerie-Designs/148024761879767?ref=ts>





Sisters